



Power Type
Base Capacity

Diesel
3000/3500 kg

CLG2030/35H-R

**TWO-WHEEL DRIVE ROUGH
TERRAIN FORKLIFT**

TOUGH WORLD. TOUGH EQUIPMENT.

CLG2030/35H-R TWO-WHEEL DRIVE ROUGH TERRAIN FORKLIFT

CLG2030/35H-R

TWO-WHEEL DRIVE ROUGH TERRAIN FORKLIFT

The Liugong 3.0-3.5t rough terrain forklift is a tough, compact forklift with a two-wheel drive system. It has the characteristics of excellent maneuverability, high stability, high efficiency and good reliability. It is especially suitable for rugged terrain.



EXCELLENT MANEUVERABILITY

- ▶ The high ground clearance and large departure Angle design provide greater maneuverability and keeps truck moving in the roughest of applications.
- ▶ The differential with automatic locking function, providing ultimate traction during inclement weather conditions and rough operating surfaces.
- ▶ Oscillating steer axle allows either wheel to step over obstacles keeping the truck and load level.
- ▶ Equipped with full hydraulic steering system to make the steering flexible and light.



- ▶ Drive axle is equipped with wide-base and deep tread tires.

Rear tyre: 27×10-12-12PR

Front tyre: 14-17.5-14PR





Increase the width of fender to reduce mud splashing.

HIGH STABILITY

Wheel base increased by 25% and wheelbase increased by 10%, providing better stability in rough terrain.



Large and shock-absorbing seat.



Superior full floating operator cabin.



LED light

High exhaust

Air inlet
filter
beforehand

HIGH EFFICIENCY & GOOD RELIABILITY



01

The integrated electric box makes maintenance and repair convenient with better water-proof performance.



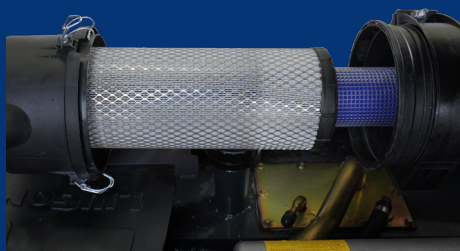
02

Heavy duty steering axle with tapered bearings.



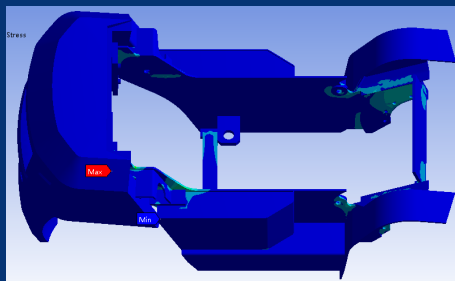
03

The combined radiator with serpentine wave and optimized heat dissipation channel enhance the heat dissipation capability to keep engine reliability even in heavy-duty applications.



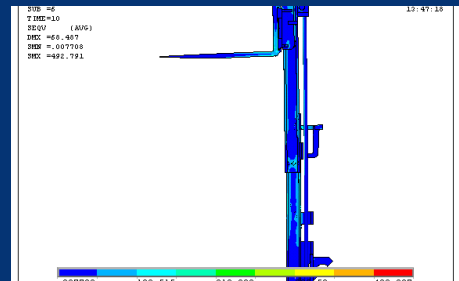
04

Dual air filter to adapt to dust conditions, prolong the service life of the engine.



05

Through CAE simulation analysis, the frame and door frame adapt to the impact of heavy load and rugged terrain. The mast tilt angle F/R reaches to 10°/12°.



SPECIFICATION

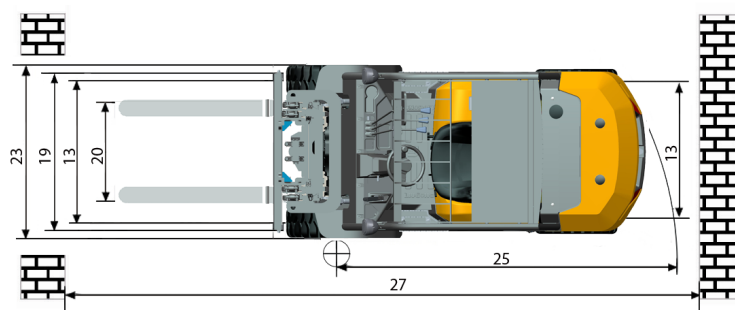
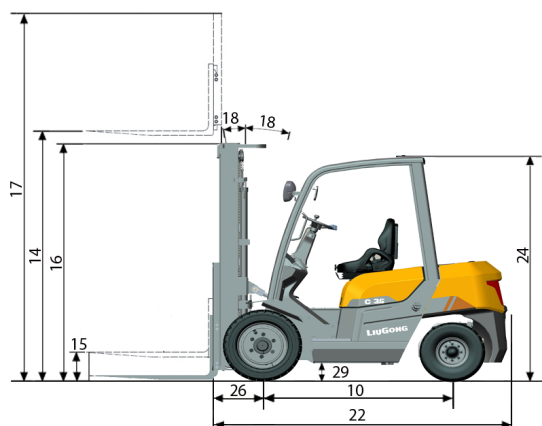
General						
Model	1			CLG2030H-R		CLG2035H-R
Power Type	2			Diesel		Diesel
Base Capacity	3	@rated load center	kg	3000		3500
Load Center	4		mm	500		500
Weights						
Service Weight	5	unloaded	kg	5150		5400
Axle Load	6	loaded / unloaded, front	kg	7080/2300		7800/2260
	7	loaded / unloaded, rear	kg	1070/2850		1100/3140
Tires						
Tire Type	8			Pneumatic		Pneumatic
Wheels	9	front / rear		2 / 2		2 / 2
Wheelbase	10		mm	1880		1880
Tire Size	11	front		14-17.5-14PR		14-17.5-14PR
	12	rear		27×10-12-12PR		27×10-12-12PR
Tread Width	13	front / rear	mm	1250/1200		1250/1200
Mast						
Max. Fork Height	14	with std 2-stage mast	mm	3000		3000
Free lift	15	with std 2-stage mast	mm	150		150
Height, Upright Lowered	16	with std 2-stage mast	mm	2365		2365
Height, Upright Extended	17	with std 2-stage mast	mm	4173		4173
Mast Tilt, Fwd/Back	18	with std 2-stage mast	deg	10°/ 12°		10°/ 12°
Carriage	19	width	mm	1150		1150
Fork Spread	20	minimum / maximum	mm	290/1150		290/1150
Fork Dimensions	21	T x W x L	mm	50 x 150 x 1070		50 x 150 x 1070
Chassis						
Length to Fork Face	22	with std 2-stage mast	mm	3136		3136
Overall Width	23		mm	1600		1600
Overhead Guard Height	24		mm	2415		2415
Turning Radius	25	minimum outside	mm	2900		2900
Fork Overhang	26	with std 2-stage mast	mm	600		600
Right Angle Stack	27	add load length and clearance	mm	4900		4900
Ground Clearance	28	minimum loaded	mm	265		265
	29	center of wheelbase	mm	280		280
Performance						
Travel Speed	30	loaded / unloaded	km/h	20/22		20/22
Lift Speed	31	loaded / unloaded	m/s	0.53/0.55		0.41/0.43
Lower Speed	32	loaded / unloaded	m/s	0.48/0.45		0.48/0.45
Max. Drawbar Pull	33	loaded	kN	18		18
Max. Gradeability	34	loaded / unloaded	%	18 / 28		15 / 28
Systems						
Brakes	35	service		Foot / Hyd		Foot / Hyd
	36	parking		Hand / Mech		Hand / Mech
Engine	37	manufacturer		Mitsubishi	XINCHAI	Mitsubishi
	38	mode		S4S	A498BT1	S4S
	39	emission compliance		EU Stage IIIA	EU Stage IIIA	EU Stage IIIA
	40	cylinders		4	4	4
	41	displacement	liter	3.331	3.2	3.331
	42	rated power	kw/rpm	35.3/2250	36.8/2500	35.3/2250
	43	Max. torque	N.m/rpm	177/1700	186/1800	177/1700



CAPACITY

Mast type	Maximum Fork Height (MFH)	Mast Overall Lowered Height (OAL)	Free Lift with Load Backrest	Mast Tilt Angle (F/B)	Rated Load Capacity				Total Weight with Standard Forks	
					With Standard Forks		With Sideshifter			
						CLG2030H-R	CLG2035H-R	CLG2030H-R	CLG2035H-R	CLG2030H-R
	mm	mm	mm	°	kg @ (500mm) LC		kg @ (500mm) LC		kg	
Standard 2-Stage	3000	2365	0	10/12	3000	3500	2875	3500	5150	5400
	4000	2915	0	10/12	3000	3500	3000	3500	5278	5528

Mast type	Maximum Fork Height (MFH)	Mast Overall Lowered Height (OAL)	Free Lift with Load Backrest	Mast Tilt Angle (F/B)	Rated Load Capacity				Total Weight with Standard Forks	
					With Standard Forks		With Sideshifter			
						CLG2030H-R	CLG2035H-R	CLG2030H-R	CLG2035H-R	CLG2030H-R
	mm	mm	mm	°	kg @ (500mm) LC		kg @ (500mm) LC		kg	
Full Free 3-Stage	4500	2460	1317	10/12		3500		3500		5670





Liuzhou LiuGong Forklift Co., Ltd.

No. 1 Yanghe Road, Liuzhou, Guangxi 545007, PR China

T: +86 772 388 6124

E: overseas@liugong.com

MH: www.lgforklift.cn

LG-PB-CLG2030/35H-R-042021-ENG

The LiuGong series of logos herein, including but not limited to word marks, device marks, letter of alphabet marks and combination marks, as the registered trademarks of Guangxi LiuGong Group Co., Ltd. are used by Guangxi LiuGong Machinery Co., Ltd. with legal permission, and shall not be used without permission. Specifications and designs are subject to change without notice. Illustrations and pictures may include optional equipment and may not include all standard equipment. Equipment and options varies by regional availability.